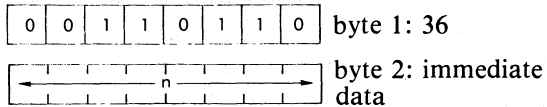


THE Z80 INSTRUCTION SET

LD (HL), n Load immediate data *n* into the indirectly addressed memory location (HL).

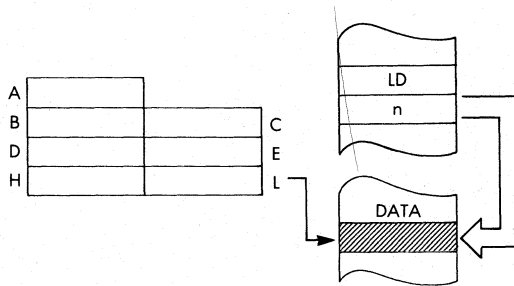
Function: (HL) ← *n*

Format:



Description: The contents of the memory location immediately following the opcode are loaded into the memory location indirectly addressed by the HL data pointer

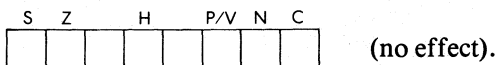
Data Flow:



Timing: 3 M cycles; 10 T states; 5 usec @ 2 MHz

Addressing Mode: Immediate/indirect.

Flags:

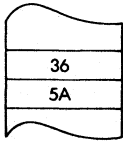
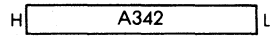
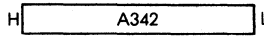


PROGRAMMING THE Z80

Example: LD (HL), 5A

Before:

After:



OBJECT CODE

