

PROGRAMMING THE Z80

LD (DE), A Load indirectly addressed memory location (DE) from the accumulator.

Function: (DE) ← A

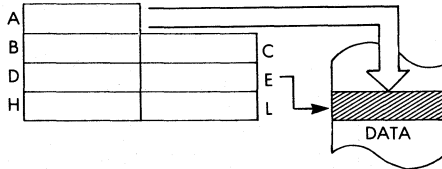
Format:

0	0	0	1	0	0	1	0
---	---	---	---	---	---	---	---

 12

Description: The contents of the accumulator are loaded into the memory location addressed by the contents of the DE register pair.

Data Flow:



Timing: 2 M cycles; 7 T states; 3.5 usec @ 2 MHz

Addressing Mode: Indirect.

Flags:

S	Z	H	P/V	N	C

 (no effect)

Example: LD (DE), A

