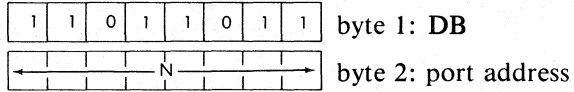


THE Z80 INSTRUCTION SET

IN A, (N) Load accumulator from input port N.

Function: $A \leftarrow (N)$

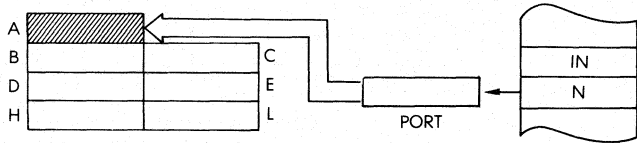
Format:



Description:

The peripheral device N is read and the result is loaded into the accumulator. The literal N is placed on lines A0 to A7 of the address bus. A supplies bits A8 to A15.

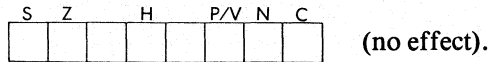
Data Flow:



Timing: 3 M cycles; 11 T states; 5.5 usec @ 2 MHz

Addressing Mode: External.

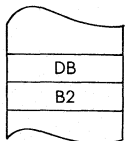
Flags:



Example: IN A, (B2)

Before:

After:



OBJECT CODE

